

## Specifications and Installation

### CagePod 1 (CP1)

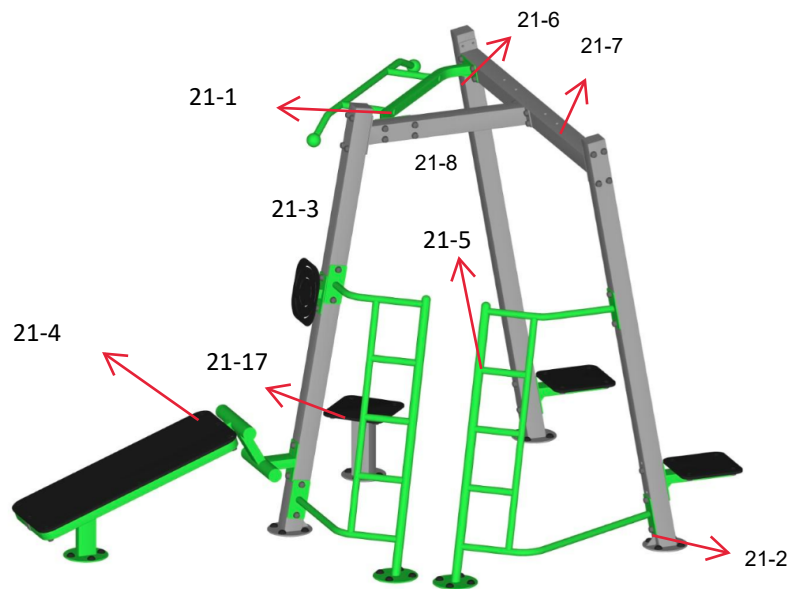


*ExoFit Outdoor Fitness Equipment*

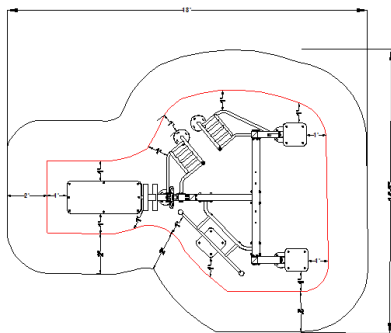
**\*\*\*AFTER EQUIPMENT IS INSTALLED, REMOVE ALL FILM OFF LABELS\*\*\***

**CAGEPOD 1 PARTS LIST:**

- ECC 21-1** Pull-up Station #1
- ECC 21-2** Column #1 (attached step #1)
- ECC 21-3** Column #2 (attached SUB target)
- ECC 21-4** Sit-up Bench (SUB)
- ECC 21-5** Push-up Station #2 (2 parts)
- ECC 21-6** Column #3 (attached step #2)
- ECC 21-7** Cross Bar connects to Column #2
- ECC 21-8** Cross Bar connects to Column #1 and #3
- ECC 21-17** Individual Step (3-1)
- ECC 21-21a** Spare Parts, Caps and Nut Protectors



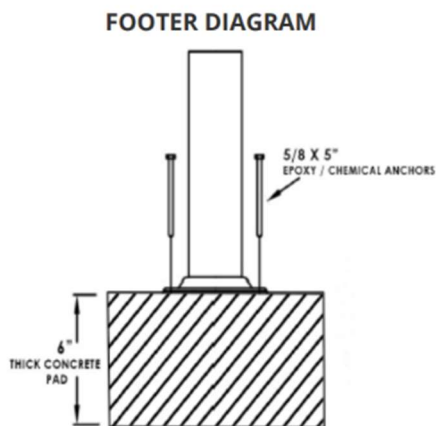
**USE ZONE:**



**CAGEPOD 1**  
CP1  
Exofit Outdoor Fitness  
(255.01 sq ft)

**\*\*\* AFTER EQUIPMENT IS INSTALLED, REMOVE ALL FILM OFF LABELS \*\*\***

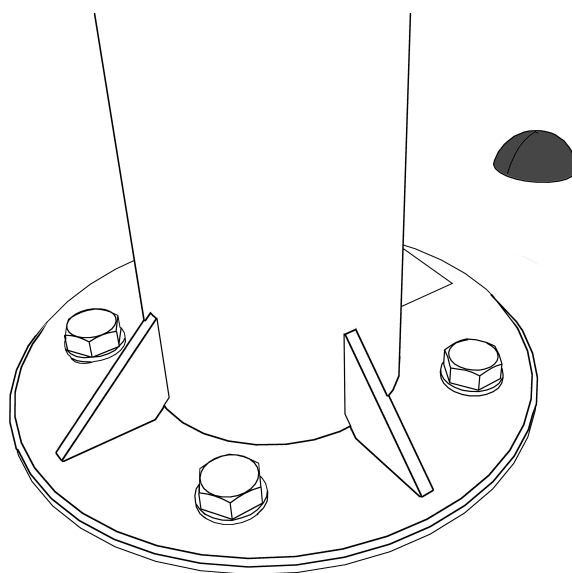
### SURFACE MOUNT INSTALLATION:



For best results, a 6" thick concrete pad is recommended.

5/8" x 5" Epoxy/Chemical Anchors are recommended for Surface Mount.  
*(epoxy anchors not included)*

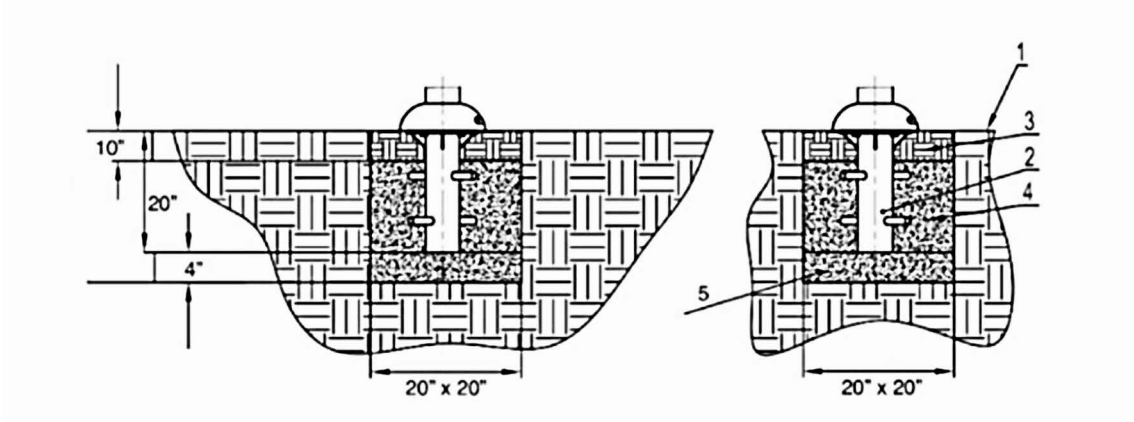
### Bolt Caps



**\*\*\* AFTER EQUIPMENT IS INSTALLED, REMOVE ALL FILM OFF LABELS \*\*\***

**IN-GROUND MOUNT INSTALLATION:**

Attach embedded anchors to the bottom of all posts first before putting them into footers. All bolts needed for in-ground installation of the embedded anchors are attached to the anchors.



Ref	Name
1	Ground Level
2	Anchor
3	Topsoil
4	Concrete
5	Concrete Block

**FOR SOFTER SOIL CONDITIONS, WE RECOMMEND 30" L x 30" W x 24" H.**